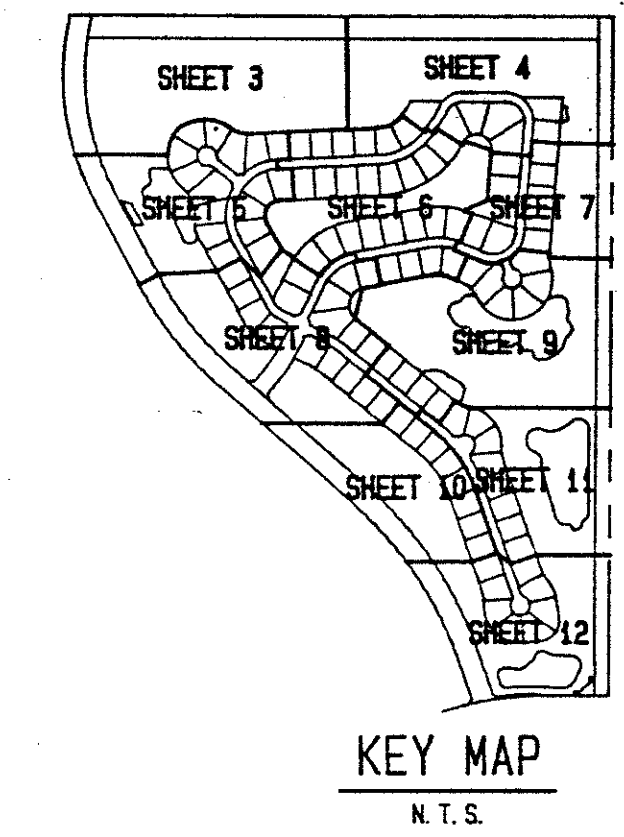


# BINK'S FOREST OF THE LANDINGS AT WELLINGTON P. U. D. PLAT 1

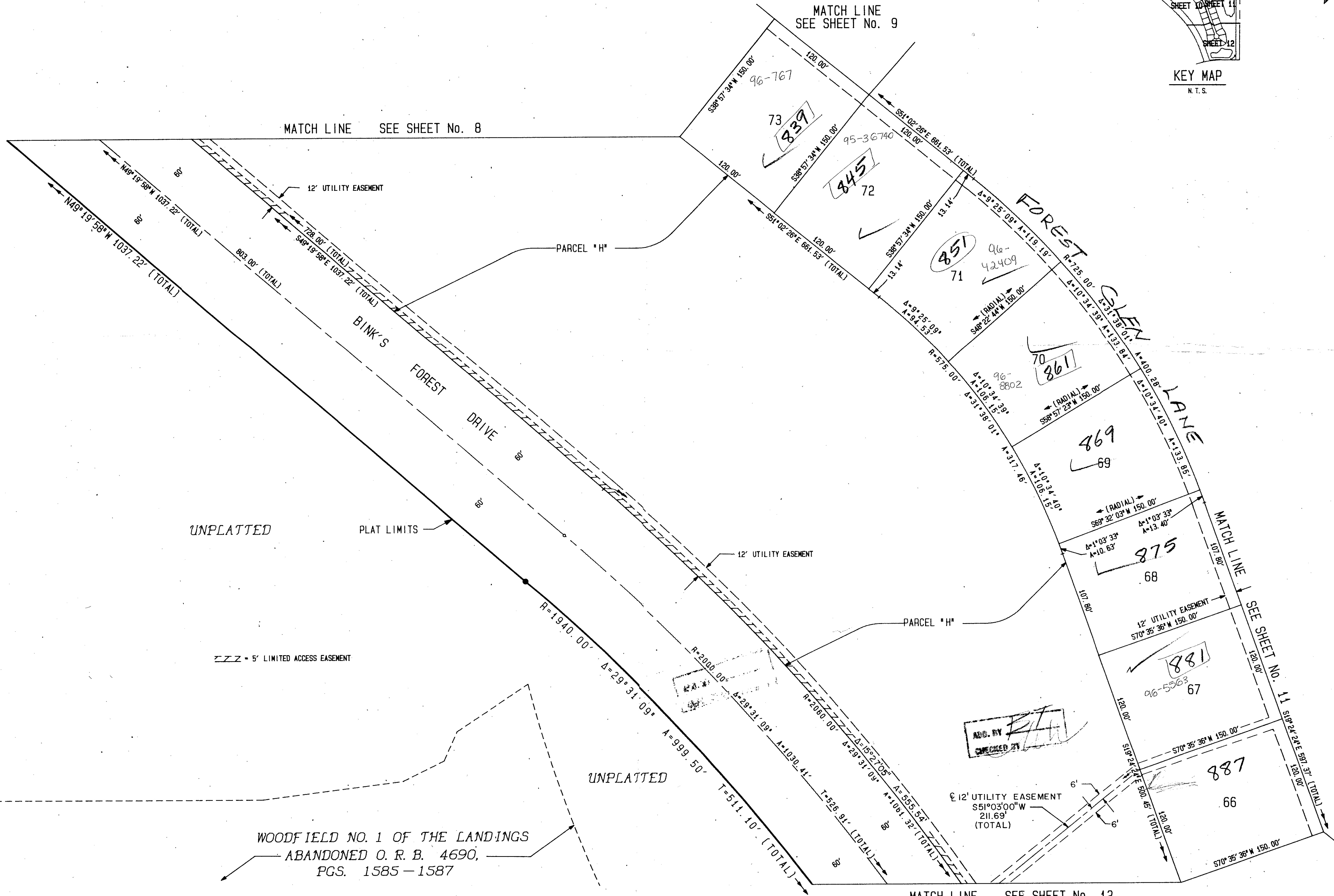
IN PARTS OF SECTIONS 6 AND 7, TOWNSHIP 44 SOUTH, RANGE 41 EAST  
PALM BEACH COUNTY, FLORIDA  
IN TWELVE SHEETS SHEET No. 10

0269-009 **65**

GEE AND JENSON  
ENGINEERS - ARCHITECTS - PLANNERS, INC.  
APRIL 1989  
SCALE IN FEET SCALE 1"=50'



STATE OF FLORIDA  
COUNTY OF PALM BEACH  
This plat was filed for  
record at \_\_\_\_\_ M. this \_\_\_\_\_ day  
of \_\_\_\_\_ 1990, and duly  
recorded in Plat Book No. \_\_\_\_\_  
on Pages \_\_\_\_\_ and \_\_\_\_\_  
JOHN B. DUNKLE  
Clerk Circuit Court  
By: \_\_\_\_\_ D.C.



TAZ 927

BINK'S FOREST OF THE LANDINGS  
PAGE 65  
REVISION B  
DATE 7/6/90  
DRAWN BY KE  
CHECKED BY M. J. J.  
APPROVED BY  
WELLINGTON P.U.D. PLAT 1

COMPUTED D. W. LEI/CADD  
DRAWN D. W. LEI/CADD  
CHECKED M. J. J.  
APPROVED

WATER MANAGEMENT TRACTS ARE THE PERPETUAL MAINTENANCE OBLIGATION OF FOURTH WELLINGTON, INC.

**BINK'S FOREST OF THE LANDINGS AT WELLINGTON P.U.D. PLAT 1**

6/44/91  
0269-009

67/65